

When to Use a Core in Beaded Braids

The single most important reason to use a core if you are braiding with beads larger than 8/0 seed beads and using #18 s-lon/c-lon is to **prevent beads collapsing in to your braid.**

This extreme example will give a great visual on what can happen if you do not use a core when one is needed.

For this example I used #18 s-lon/c-lon and size 2/0 seed beads!
Yup, size 2/0, big guys!

Figure 1 shows the braid without any manipulation. It doesn't look too bad at this point.



Figure 1

Figure 2 shows the center of the braid. HUGE space in the center!



Figure 2

© 2014-2015 Created by Heidi A. Sather of Pacific Patina.

This document may be freely distributed as long as creator information remains intact.

www.PacificPatina.com ♦ PacificPatina@hotmail.com ♦ www.facebook.com/PacificPatina

Figures 3 and 4 show manipulation of the braid; “squishing”, this is an attempt to mimic wearing this braid against the skin and normal movement such as pressing your wrist against doors, keyboards while typing, etc.

Notice the bead under the yellow arrow in both pictures. It is falling in to the center of the braid; the area shown in Figure 2 because there is nothing to prevent it from doing so!



Figure 3

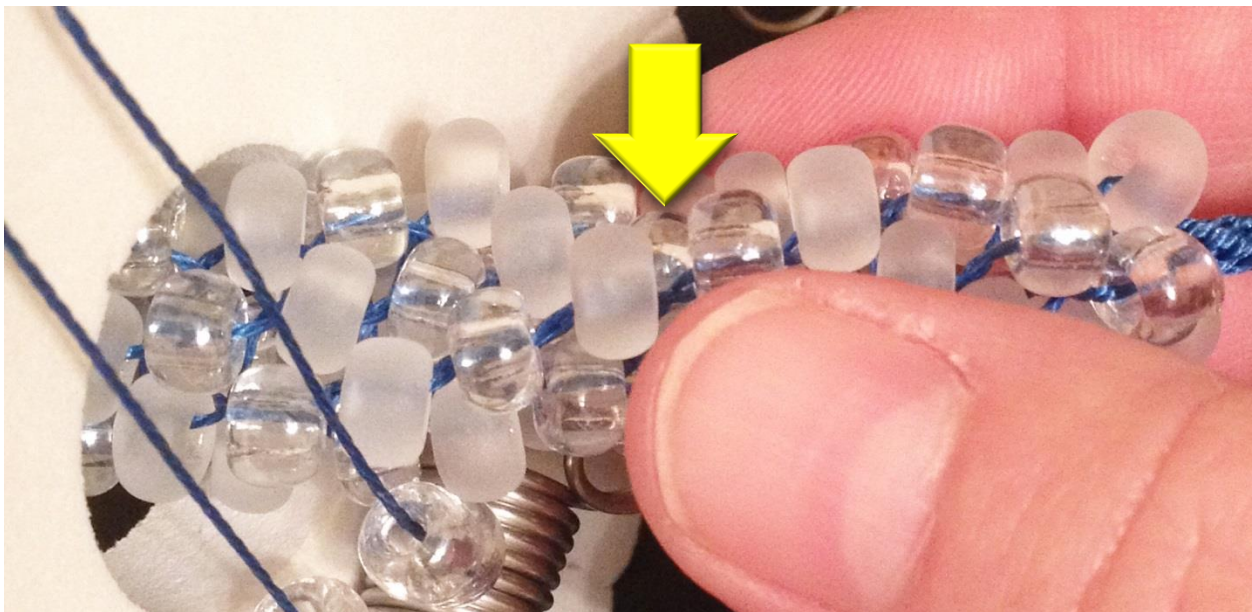


Figure 4

A thicker cord (one that fills 1/2 to 2/3 of the bead hole) OR a core prevents this from happening.

For a fantastic and thorough resource on beading cord and beads in kumihimo take a look at Carolyn Haushalter's page here <http://topcenter.typepad.com/blog/cord-for-beads/>

© 2014-2015 Created by Heidi A. Sather of Pacific Patina.

This document may be freely distributed as long as creator information remains intact.

www.PacificPatina.com ♦ PacificPatina@hotmail.com ♦ www.facebook.com/PacificPatina

Figures 6 and 7 show the same braid with a knitting needle inserted into the core space. The knitting needle measures approximately 5mm thick as shown in Figure 5.

In the close-up (Figure 7) you can see how using a core prevents your braid from irregularity in two very important ways:

1. The bead spacing becomes much more uniform as a core does not allow beads to enter the center of the braid.
2. You can also see how much more uniform the #18 s-lon/c-lon braid structure becomes through the beads, especially in Figure 7.

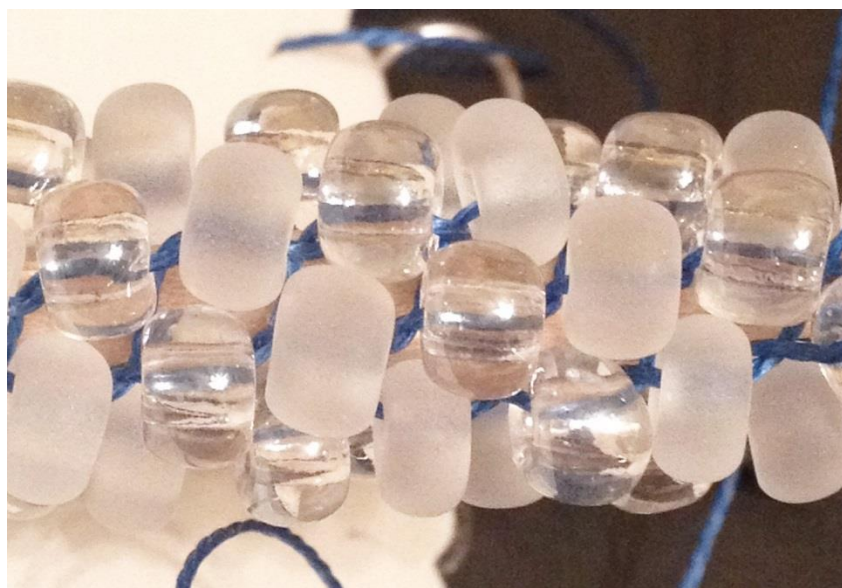


Figure 7

This document was created for Training Day Thursdays in the Facebook group Kumihimo “New Dimensions” (KND). If you have found this posted outside of the group please consider joining at <https://www.facebook.com/groups/777090989025312>

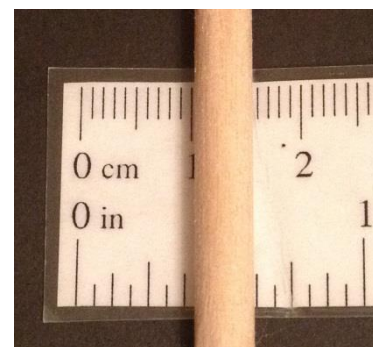


Figure 5



Figure 6